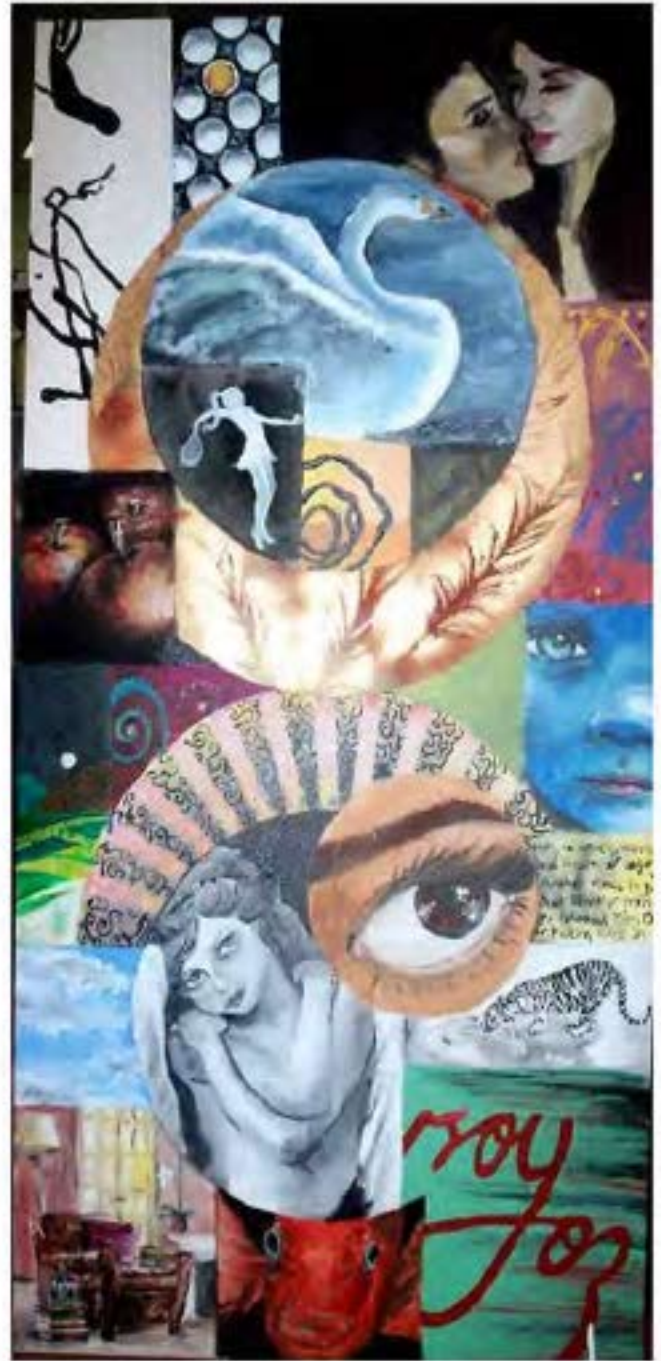


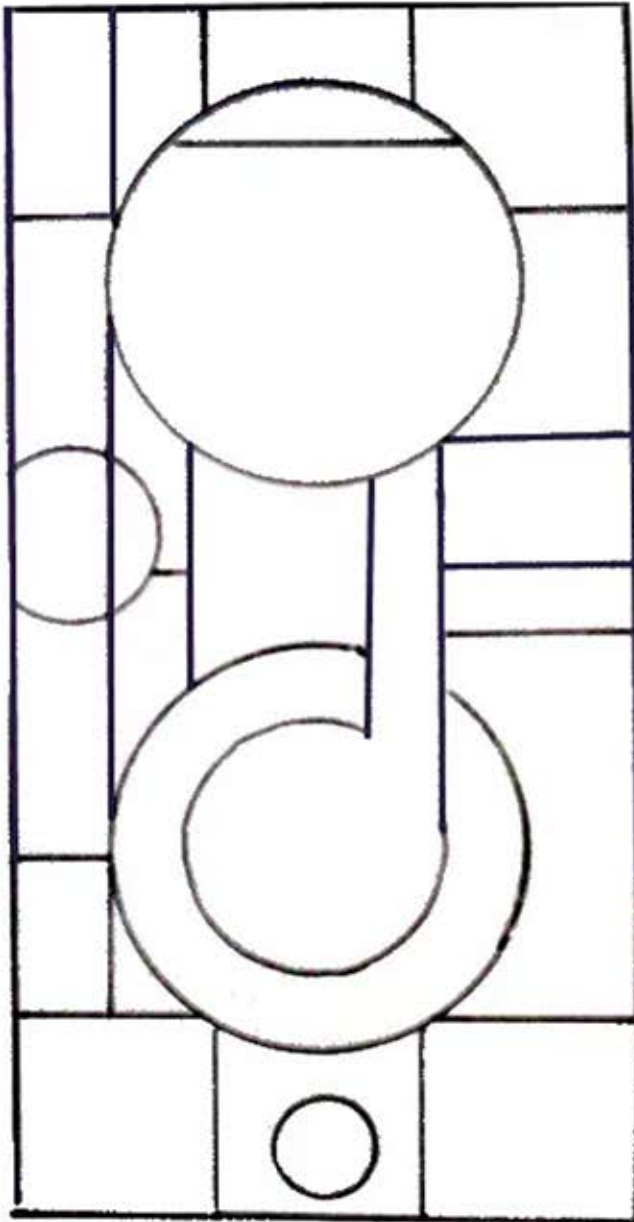
# Your Eye From a Mirror

Instructions on what needs to be included:

1. Your eye – from a mirror
2. Create something that starts and is established in one section and flows from that section to another section
3. Cultural image (can be a pattern found dominant in one culture such as a Persian rug, or an image/object that represents the beliefs or life style of a particular culture, such as a Buddha, Moroccan architecture, Eiffel Tower or a sombrero)
4. An egg
5. An easily recognizable Masters' Reproduction detail (your choice) Masters' Reproduction - Famous painting from a known artist
6. Part of a mechanical object
7. Your signature
8. Landscape/Seascape as seen through a door, a key hole, a crack in the wall or a window. 3 areas need to be developed:
  - A) the area in front of the door, key hole, crack or window;
  - B) the actual door and door frame/the key hole and hardware that helps define it, such as the door knob/the crack in a painted wall or brick wall or paneled wall or a wall papered wall/window and window frame;
  - C) the landscape or seascape located beyond the door/key hole/crack/window during a definite season.
9. A container with text and a logo (soft drink can, juice box, snack box, round oatmeal container, Comet Cleanser can, milk carton or container, etc)
10. The face of a bird, fish, reptile, or other animal.
11. A chair
12. A black and white section inspired by your first black and white acrylic painting.



# Your Eye From A Mirror (page 2)



## Instructions:

You have a basic design format you are to use.

You can alter it slightly, if necessary. Your final must consist of 24 sections with 2 large circular areas included in the 24 sections. There are to be **NO DIAGONAL DIVISION LINES**. If you change the format be sure, at the time you are graded, you can give a strong reason for the changes. (See the example design to the left)

No more than two areas can be non-objective abstract areas.

Just a suggestion: Consider treating the piece as a stained glass window with use of heavy black lines defining the edges of the divisions.

The basic design format is already a balanced design. Do not destroy the balance by having a large black and white area on one side and no other black and white area. Also balance contrasts, warm and cool colors, visual weight, and detail. The best ways to do that is to "Balance as You Go" and use the mirror trick while turning your art all

## Materials

- \*Mirrors.
- \*Masters' Reproductions
- \*Egg
- \*Cultural Image
- \*Mechanical Object
- \*A container with text and a logo
- \*Any paper or canvas you have
- \*Any medium you've got lying around, pencil, paint, whichever
- \*Any size you want, but the smaller you make it, the less detail you'll be able to add